

WV880IR

VIRTUE SERIES

INFRA RED WEATHERPROOF CAMERA
WIDELUX3, 50M



KEY FEATURES

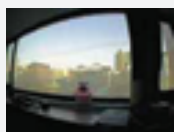
- 1/3" Sony 960H Double Scan Super HAD CCD II
- WideLux3
- Super Wide Dynamic Range (sWDR+ATR-EX2)
- 2D/3D Noise Reduction (2D/3DNR)
- 800TV Lines
- Smart IR
- Highlight Suppression Compensation (HSC)
- Digital Image Stabilizer [DIS]
- IR Cut Filter [IRC]
- Motion Detection
- Varifocal lens 2.8 - 12mm
- IP67 Weatherproof
- Min illumination 0lux - 50m [IR LED On]
- 12VDC



FEATURES IMAGES

WIDELUX 3

WideLux WDR provides special intelligent solutions and analyzes the exposure ratio and optimizes to reach a superior image quality.



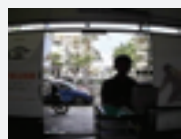
Conventional WDR



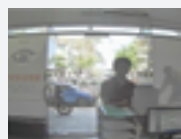
WideLux WDR

WDR (Wide Dynamic Range)

The WDR function of a camera is a technology that compensates for high contrast of light and shadow situations. This makes it possible to monitor surveillance in interior or exterior settings with dim lighting and high shadows.



WDR OFF



WDR ON

2D/3DNR (3D Noise Reduction)

2D/3DNR is another reference with WideLux WDR Technology. Produces noiseless image with 2D/3D filtering Noise Reduction Technology so that user can save the volume of storage media and HDD capacity in DVR.



Normal Camera



3DNR Camera

DIS (Digital Image Stabilizer)

This technology reduces motion blur by using pixel outside the border of the visible frame to provide a buffer for the motion. Increasing the exposure time without blurring the image makes the moving subject stabilized digitally.



Conventional



DIS

TECHNICAL SPECIFICATIONS

Resolution	800TV Lines
Image Sensor	1/3" SONY 960H Double Scan Super HAD II CCD
Scanning System	2:1 Interlace
Effective Pixel	NTSC : 976(H) x 494(V), PAL : 976(H) x 582(V)
Min. Illumination	0Lux (IR ON)
Electronic Shutter	NTSC: 1/60~100,000 sec. PAL: 1/50~1/100,000 sec.
Lens Type	Varifocal Lens 2.8-12mm
S/N Ratio	>50 dB (AGC Off)
Video Output	1.0Vp-p Composite 75 Ohms
Gamma Correction	0.45
Frequency	Horizontal : (15.734KHz / Vertical : 59.94Hz NTSC), (15.625KHz / Vertical : 50.00Hz PAL)
Synchronization	Internal
IR LED No	15nos
IR Visibility Range	50m
IR Cut Filter	Yes
Power Supply	12VDC
Power Consumption	150mA (IR off), 450 mA (IR on)
Work Humidity	Within 90% RH
Operation Temperature	-10°C ~ +50°C (14°F ~ 122°F)
Dimension (w x l x h)	101 mm x 140.4 mm x 297 mm
Weight	1,900g

OSD MENU

Scene Select	Custom / Full Auto / Indoor / Outdoor / Backlight / ITS
Picture Adjust	Brightness / Contrast / Sharpness / Hue / Color Gain
E-Zoom	On / Off
DIS	On / Off
Privacy Mask	Area Select / Display / Position / Color / Transparent / Mosaic
Motion Detection	On / Off
System Setting	Sync Mode / Lens / Flip / LCD / CRT / Communication / Camera ID
Language	English / Spain / Russian / Portuguese / Deutch / French / Japanese